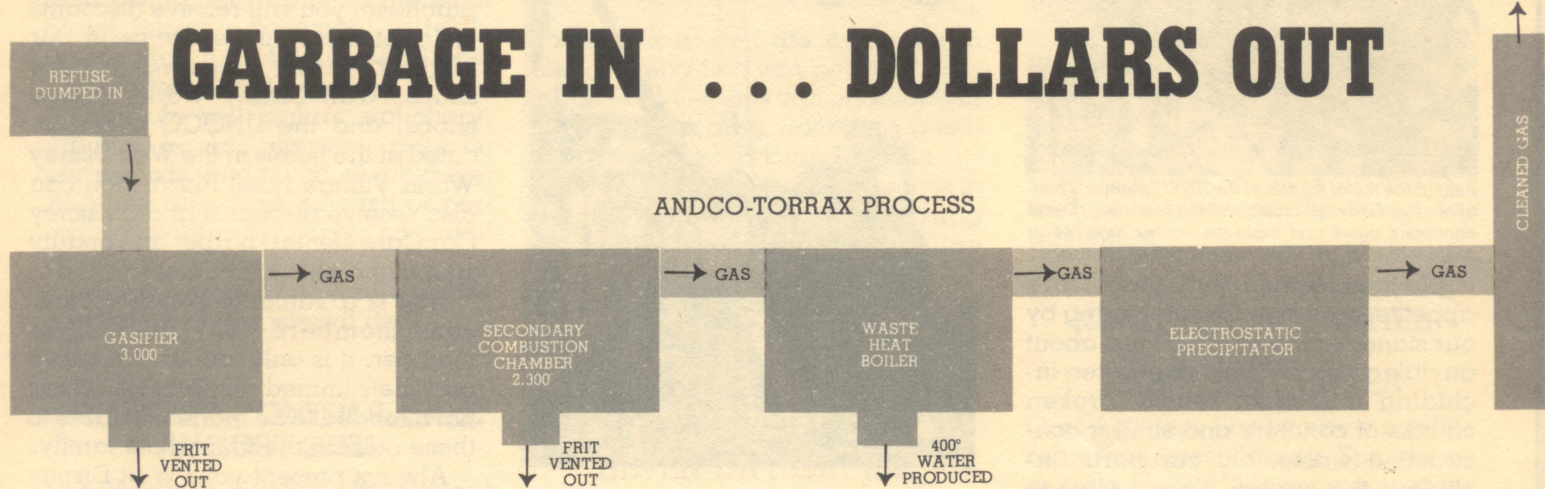


Eyes AND Ears



It stands like the proverbial money tree in the field across from The Center. A tree where one spreads fertilizer on the ground under it, to have money blossom on limbs above it.

Only our money tree is a huge complex of steel pipes, lava-hot temperatures, and high pressure gasses. A modern, mechanical money tree that less than one year from now will eat 100 tons of pure garbage daily, and give us back dollars in the form of high intensity heat and hot water.

Like a money tree, it is painted green on the front. But behind the green leaves of its sheet metal facade is an absolutely amazing tangle of two-inch thick pipes, combustion chambers, concrete, cranes and hundreds of construction workman scurrying up and down its vertical length.

The sign out front calls it the Solid Waste Energy Conversion Facility ... SWEC for short ... a "Star Wars" kind of name that brings the future into the "now." And a tour of the steel works behind the facade only adds to that feeling of the future.

That's because the SWEC plant is the kind of plant we've all been told will be here in the future ... a "good for mankind" type of plant where you dump in all the bad things we produce and get back out energy with no pollution of the air.

It's "good for mankind" piece of technology that is right in line with our original concept for Epcot; a community of ideas where new systems and technologies for tomorrow's world can be demonstrated.

Rhett Jones, project manager for the SWEC plant, chopped through all the technical jargon to explain how the facility will operate next summer, when the blast-furnace-type flames will be turned on.

Raw waste of every type will be dumped into a furnace called a **gasifier**. High intensity heat of up to 3,000° will first cook the waste, causing it to expel all of its gasses, then burn it down to its basic elements. Those gasses are then drawn out of the gasifier and into a **secondary combustion chamber**, where temperatures of up to 2,300° will complete the burning cycle.

As the gasses leave the secondary combustion chamber, having been cleansed at temperatures high enough to melt steel, they will pass through a conventional **waste heat boiler** transferring that energy to water being piped in a jacket around it. That water,

heated to 400°, will be used to supply approximately 20% of the air-conditioning and heating demands in the Magic Kingdom.

Although burned twice at temperatures of up to 3,000°, the gasses pass through still one last chamber, an **electrostatic precipitator**, a device that electronically "cleans" all of the gasses before entering the chimney and atmosphere.

"The SWEC process is less polluting than any conventional incinerator; it is the cleanest burning process currently available today," Rhett pointed out.

Once the two combustion chambers are fired up to full operation, the plant becomes a near perpetual motion machine, in that each combustion chamber uses its intense heat to keep the other burning. Because of that, the plant's fuel ... raw garbage and other waste material ... must be continuously fed into the burner's carnivorous mouth, 24 hours a day.

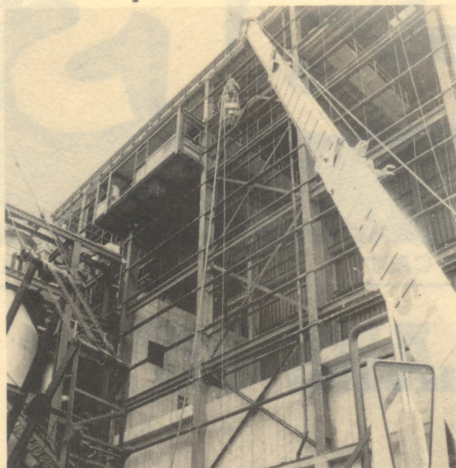


Rhett Jones, Project Manager for the SWEC plant, is the Chief Mechanical Engineer for the Reedy Creek Utilities Co. Prior to the construction phase, Rhett supervised the design of the plant, which became obvious while touring the facility ... there didn't seem to be a bolt or valve which Rhett didn't know all about, no matter how insignificant a role it plays in the operation.

Walt Disney World produces an average of 50 tons of refuse daily, only half of the projected volume needed to keep the furnaces operating. Knowing this prior to the plant's groundbreaking, a search was conducted to secure additional garbage. An agreement was soon reached between Orange County and the Reedy Creek

Continued from Cover

Improvement District for the county to divert 50 tons of refuse daily from their landfill sites to the SWEC plant. County trucks will begin dumping here next year.



Behind the metal facade of the SWEC plant is a beehive of activity as construction personnel thread enormous pipes and eight-ton valves together in preparation for the plant's opening next summer.

Rhett explained that the plant's appetite is not very discriminating by our standards, it will "eat" just about anything dropped into its gasifier; including municipal refuse, broken chunks of concrete and similar construction waste, old car parts (including the engine block), sewage sludge, plastic products, waste oil sludge, vegetation cuttings, etc.

SWEC HOTTER THAN MOUNT SAINT HELEN

When Mount Saint Helen belched forth her rivers of destructive lava recently, scientists measured it at temperatures ranging up to 2,200°. Molten lava, which consists mostly of liquid rock, is actually **cooler** than the intense temperatures generated inside the plant's gasifier chamber. Temperatures are so high that they don't just melt cement and steel like a volcano would, but actually cause it to **ignite** and **burn** down to its basic elements.

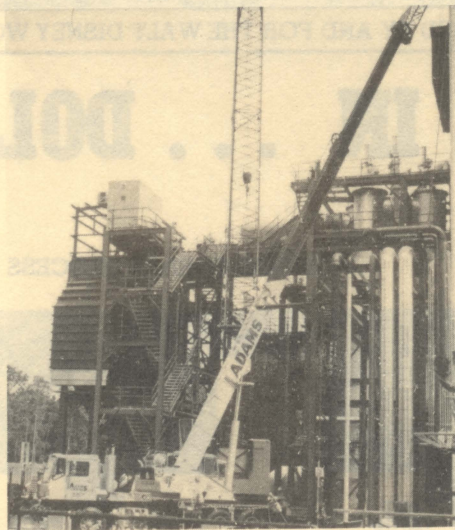
Once the refuse has burned completely, at temperatures ranging up to 3,000°, a black glassy material similar to coarse sand results. Called **frit**, the substance is vented out the bottom of the burning chambers and allowed to cool.

Although frit looks like black sand, it is nearly twice as heavy by volume. A bucket of frit will weigh the same as two buckets of sand or three buckets of water.

The combustion in the chambers is so intense and complete, that the resulting frit is only 3-5% of the refuse's

original volume, and 15-20% of its original weight.

Scientific studies of frit show it to be completely **sterile** and **inert**. When mixed with soil, it will not dissolve or otherwise leach back into the earth polluting it. This makes frit another valuable by-product of the SWEC plant; for mixing with asphalt, making cement blocks, terrazzo flooring, as a decorative landscape material, and a number of other uses in the future.



OUR PLANT U.S. PROTOTYPE

The technology for high temperature burning of municipal wastes was developed in early 1969 and given the name "Andco-Torrax Process." Although developed here in the United States, the first plants using the process were built outside our country in Germany, France, and Japan.

The U.S. Department of Energy entered into a partnership with the Reedy Creek Utilities Company, to build a prototype plant here as a **test-facility** for future plants.

After carefully studying the operation of our SWEC plant beginning next year, the federal government proposes to build a larger, \$500 million plant in Idaho to dispose of radioactive materials. However, it should be noted that our Walt Disney World plant **will not** involve any radioactive materials. The government will only study the methods of operation.

Like many of the other innovative systems at work on our Walt Disney World site, the SWEC plant is another forerunner in high technology. And it's the best type of forerunner, one converting a **liability** (municipal waste) into an **asset** (energy and frit).

FOR YOUR BENEFIT



EMPLOYEE DISCOUNTS

To express appreciation for all your efforts here at Walt Disney World, cast members are extended certain discount privileges as one of your benefits.

By showing your validated Walt Disney World ID card at the time of purchase, you will receive discounts on most merchandise items in our Magic Kingdom shops, resort hotel shops, Walt Disney World Village shops, and the UNOCO shops located at the hotels in the Walt Disney World Village Hotel Plaza. You can also receive discounts at our Disney Car Care Center, barber and beauty shops and our golf courses.

This is a valuable benefit for our cast members, but please remember, it is only for cast members and their immediate families and is not intended to be made available to those outside the immediate family.

Always present your Walt Disney World ID to the sales host or hostess at the time of purchase to enable them to include your discount in the transaction. And remember that this benefit is for your **exclusive** use.



WED/ART & DESIGN FORUM AUGUST 19

The next in a series of **Career Information Forums**, offered through the Career Planning and Placement Office, will be held **Wednesday, August 19**, from 5 to 7 p.m. in the Stage Door Cafe, first floor of The Center.

The forum will center on **WED/ART & DESIGN**. If you are interested in more information on this aspect of careers offered by the company, be sure and mark your calendar to attend. This forum is open to all cast members.

For more information on this forum and others, call Career Planning and Placement at extension 2860.



MOUSELLANEOUS

HALLMARK HALF-PRICE SALE

The Hallmark Shop on Main Street, U.S.A., has such a deal for you — their semiannual **Half-Price Sale!**

The sale is all set for **Wednesday and Thursday, August 19 and 20**, from 8 a.m. until 3 p.m. at the Main Street Bargain Basement, directly across from the Main Street Breakroom in the tunnel.

This sale will feature stationery, albums, books, plaques, puzzles, party goods, and much, much more! All purchases must be cash or personal checks only; sorry, no credit cards can be accepted.

Mark the dates and be sure to take advantage of this special deal.

PROPERTY CONTROL SALE AUGUST 26TH

The Property Control Department will be holding a sale on **Wednesday, August 26**, from 9 a.m. till 3 p.m. at the Excess Property Yard adjacent to the Casting Building.

This sale is for employees and their spouse only, and you must present a WDW ID to enter. No children will be permitted inside the sale yard.

On sale will be typewriters, automobiles, calculators, furniture and from the Contemporary Resort Hotel, glass sliding doors, arcade machines, blankets, three-wheel bikes, lost and found articles, and much more.

NEW EPCOT TICKETS ON SALE

Effective immediately, Cast Activities will be selling a new type of ticket called the **Epcot Commemorative Ticket** to cast members. The **discounted** employee price is:

Adult — \$24.00
Junior — \$19.25
Child — \$14.50

This ticket is a commemorative ticket and will not be honored until the opening of Epcot on October 1, 1982. At that time, the commemorative ticket can be exchanged for a Three-Day World Passport.

ARRIBAS BROTHERS SALE

There will be a sale of assorted Arribas Brothers merchandise on Thursday and Friday, August 20 and 21, in conjunction with the regularly scheduled **Bargain Basement** hours.

An assortment of the fine Arribas Brothers crystal and ceramic merchandise will be priced up to 60% off.

VANPOOL OPENINGS

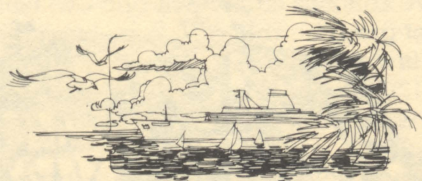


There are **immediate openings** in the following two van pools:

- Van Pool 4 — This van originates in the **Pine Hills area**, operating weekdays for those working day shift.
- Van Pool 6 — This van originates in the **Kissimmee area**, operating weekdays for those working day shift.

For additional information on either van, please call **Dent Thompson** in Cast Activities at 824-4254.

SIGN UP NOW FOR A SEVEN-DAY CRUISE



Plan your vacation now for the beautiful Bahamas. The SS Starward from the Norwegian Cruise Lines will depart from Miami on **Saturday, October 24**, and return on **Saturday, October 31**. You'll start your journey at Port Au Prince, capital of Haiti, a combination of French and Caribbean heritage. Next stop will be Ocho Rios, one of the most glamorous ports in Jamaica. Plan a tour to Dunn's River Falls, a cascading wonderland cutting through the jungle to the sea. After an evening of fine food and an island show, your next stop is Nassau. A day of shopping awaits you at the world's largest straw market, a tour around the island by buggy and you're ready for the night life. Here you have a choice of a Goombay rhythms native show or the famous casino show on Paradise Island.

All throughout the cruise, you'll enjoy the finest cuisine. Nightly entertainment, dancing, and plenty of

action at the casino will keep you busy when not in port.

Each day offers plenty of sunning and swimming. There's a morning exercise class, shuffleboard, table tennis and skeet shooting.

Your last stop before heading home is an island beach party. This exclusive Bahamas Out Island offers a sparkling beach, glass-clear waters and lots of food and entertainment. This full day beach party also offers an opportunity to snorkel the blue Bahamian waters. You'll see exotic fish, coral, and many other underwater secrets.

Sign up to reserve your place immediately. Only \$100 will reserve your spot on this week-long holiday. Cabins start at \$717 to \$756 and are based on double occupancy. Stop by Cast Activities for more information and your place on the seven-day adventure.

NEW CAST ACTIVITIES SATELLITE REPRESENTATIVES

Cast Activities has two new satellite representatives: **Randy Sprayberry** at Vista-United Telecommunications and **Mary Gamlin** at the Print Department; which is a brand new satellite created to serve all the cast members at our off-site print shop.



Print Department Cast Activities Satellite representative **Mary Gamlin**.

Both Mary and Randy have volunteered to be satellite representatives. Besides all their normal work, they will be able to assist employees with Cast Activities information. Stop by to see them for discount cards, Family Film Festival tickets and other Cast Activities goodies. Also, say "thanks" for the extra effort they are making in keeping you up-to-date on Cast Activities events.

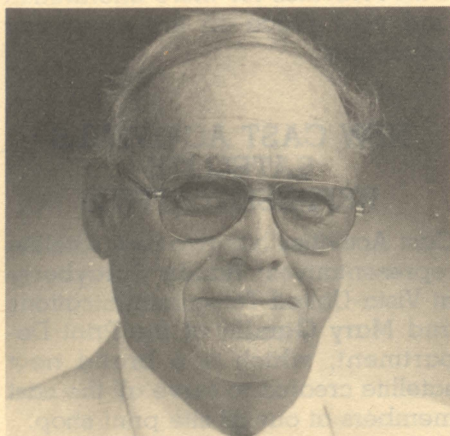
Yes; the countdown continues! Just 412 days away from the day Walt Disney's dream of Epcot becomes a tangible reality. With time fast slipping by, the Epcot Center shows ever increasing activity and growth. Just three weeks ago, we reached one of our milestones at the construction site, with the formal capping of Spaceship Earth. In a small ceremony high atop the 18-story geosphere, the American flag was raised. Spaceship Earth has been designated as the center-piece of the Future World area of Epcot Center. Presented by the Bell System, Spaceship Earth will treat guests to a journey through time, a journey that will carry them back to the dawn of recorded history and then forward to the present. The attraction will finish with a glimpse of the bright future. Now, let **EYES & EARS** take you aboard our imaginary time machine . . . starting back only six months ago and ending with today!

Walt Disney World®
EPCOT CENTER



MICKEY'S GOLDEN EARS CLUB

BOB SHEEHAN RETIRES



Robert Sheehan, Supervisor of Resort Maintenance in the Contemporary Hotel, retired last week after 10 years of service with the company.

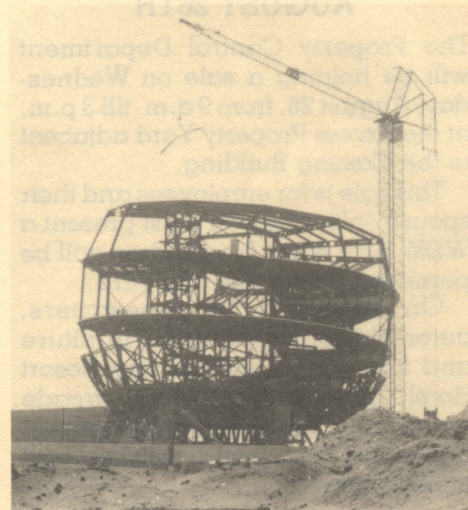
Prior to joining the company in February of 1971, Bob was a Utilities Foreman for Trans World Airlines at the Kennedy Space Center.

He started with RCID as a Boiler-Chiller Mechanic at the Central Energy Plant. In November of 1971, Bob transferred into the Resort Division as a Plumbing/Air-Conditioning Mechanic at the Polynesian Village.

In February 1972, Bob became an Assistant Supervisor for Resort Maintenance, and in September 1972, was promoted to full Supervisor. In 1975, he moved to the Golf Resort and in 1976, transferred to his final position at the Contemporary Resort.

Bob and his wife hope to seek out and purchase a small marina in south Florida to operate as a family business, reflecting his love for the water as a native Floridian.

Good luck to Bob Sheehan in his retirement.



By Scott Hartwigsen, Disney University

CAST ACTIVITIES



CANOE RACES CLOSE

Action was hot and heavy again in the wee small hours of the morning last week, as Divisional Champions were crowned and the Canoe Challenge . . . pitting the three newly "golded" championship teams . . . stroked in the handicapped race for the title of "Canoe Champions of The World."

First, in Men's Division competition, Watercraft's team cruised to a 5:03.4 followed by Central Shops who turned a 4:58.9 with both teams bettering their qualifying times. Next came the defending champs, WED Industrial Engineering, who while qualifying second, had to be the odds-on favorite. They left no doubt either, as they sped to a 4:52.3, almost four seconds faster than their qualifying time. Last up was a steadily improving Contemporary Marina team who had qualified in the top spot with a 4:55.4, however the best they could return this time was a 4:56.0 as the Engineers time held for the top spot.

Next morning saw the largest field ever take to the water as the Mixed Division with seven teams paddling, made waves on the Rivers of America. Final times follow, but suffice to say that the defending champs, Fort Marina, took the gold with a sparkling 5:22.3 by just two and five-tenths seconds over the Contemporary Marina squad for the second time. The Marina gang took the silver with a 5:24.8, followed by a surprising Liberty Tree gang with a 5:25.8. The Originals, who had the fastest qualifying time with a 5:21.6, slipped to fourth with a 5:26.0, MIS came next with 5:27.0, Central Shops sixth with 5:27.7, and the River Rats last with 5:29.9.

Next morning saw the Ladies take to the briny deep, and here the favorite prevailed again as Rob's Racey Women defended their last year's gold, to repeat with a 5:20.6, better than the Mixed team winner. Following were the WD Travel Company, who improved their qualifying time by almost 15 seconds to really pull the upset of the year as they "low-timed" a Contemporary Marina team that had registered a 5:48.3, but slipped to a final third place finish with 5:56.7. Last but not least, came CRO's Crew from Central Reservations, who started slow but lowered their time to a 6:37.3.

Next morn saw the three divisional champs ply their wares and here again, an upset, as the defending champ, Fort Marina with the biggest handicap, turned a slower time than their divisional final time. WED Industrial Engineering got off first and sped to a 4:51.1. Fort Marina then paddled to a 5:25.5 which with handicap was reduced to a 4:55.5. Last came the gals, and they flashed to a 5:13.4, over seven seconds lower than their divisional best effort, which, when handicapped gave them a 4:56.5.

Next morning saw the Victory Breakfast at the Crystal Palace with **Bill Hoelscher**, Director of Operations, presiding. Bill introduced **Tom Eastman**, Director of the Disney University, who presented the coveted **Golden Paddle Award** to **Cecil Robinson**, General Manager, Central Shops, and **Joe Wilson**, Captain of the Central Shops squad. Tom noted that the award was for perfect attendance, enthusiasm, spirit, and the ability to have fun during the competition, plus cooperation, teamwork and organization. Bill then introduced the team captains for each division Runner-up Champs, followed by the Division Champs for each group.

Thus ended the **Tenth Annual Canoe Race**, which started here in 1972 and while still having a long way to go to beat the Disneyland Races which started in the late fifties in California, had to be close in total fun and good competition. Cast Activities thanks all for their interest and just plain "being there."



SPORTS, CLUBS & SPECIAL EVENTS

DIVE CLUB NEWS

The next Dive Club meeting will be Tuesday, August 18, at 7:30 p.m. at the Pinehurst Apartments Clubhouse on Oak Ridge Road and Texas Avenue in Orlando.



The club meets the first and third Tuesdays of every month, and welcomes all Walt Disney World cast members who are certified divers. Our first meeting in September is a PARTY. Get on out and meet our new members from the current Basic SCUBA Class. It's Tuesday, September 1, 7:30 p.m. at Pinehurst Clubhouse.

- September 5 & 6 — Dive Pompano Beach — \$45 includes one night's lodging, meals, four dives and two air fills. Call **Lorna Reed**, evenings, at 351-5292.

- September 12-13 — Pennekamp/Key Largo. Includes five dives (one night dive), air fills and two nights' lodging. All for only \$85 and there's room for 11 divers. Call **Michael Craun**, evenings, at 859-2173.

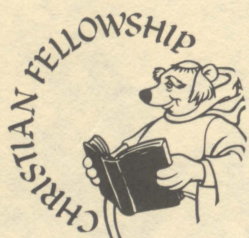
- September 20 — Dive the Gulf. We have set up a 42-foot Hatteras to take us on a two-tank dive out of Tampa. Bring your spear gun and the largest lobster bag you can get. Room for only six divers at \$40 each. Contact **Al Springer**, evenings, at 299-4378.

WATER-SKI LESSONS

Water-ski lessons at Little Lake Bryan continue to arouse interest, as our team of volunteer ski instructors expand the hours and days they are available to teach lessons. The schedule at this writing is:

- Fridays thru Tuesdays — 7 to 11 a.m. and 6:30 p.m. to dusk
- Saturdays only — 8 to 11 a.m. and 6:30 p.m. to dusk

Rates for ski instruction, with all equipment furnished, are \$3 for 15 minutes of instruction per person, or \$6 per half hour, or the hourly rate of \$12 per hour for four persons. Those who do not know how to ski have priority in availability of time. Employees and their families are encouraged to take advantage of this excellent instruction now, while it is available. Just drop by the Lake during ski operations and check with the ski instructor. Lessons remain on a first-come-first-served basis, with no reservations taken. Learn to ski now before the coming fall season.



Just a reminder that two new groups have formed for sharing and study:

- Adventureland Breakroom, Fridays, 7:30-8 a.m.
- Contemporary Resort, Thursday, 12:15-1 p.m. Call Sally (ext. 3593) or Drew (ext. 3456) at the Contemporary for weekly locations.

To become a member of a sharing group call Lydia, extension 5547, for the nearest location. Also place your name on the mailing list and receive the monthly "Loveletter," it will lift your spirits! The fall family picnic is scheduled for September 19 at Little Lake Bryan. Ask how you can help make this day a beautiful experience.

GOLF THE MAGNOLIA ON AUGUST 23

There is still time to sign up for the August 23 golf tournament scheduled for play to start at 11:04 a.m. on the Magnolia Course. This is an individual handicap game, a chance for you to really show your

stuff! The Golf Association is for all Walt Disney World cast members and families, with membership only \$10. This entitles you to very reasonable rates in all tournaments, excellent prize money and a great group of members who enjoy this great sport and play continuously.

For any questions on the Golf Association, call **Harry** at extension 4661 or stop by Cast Activities to become a member and sign up for the next tournament.

W.S.I. OFFERED

The Resort Division Training Office is offering a Water Safety Instructors class, August 24-28, from 7 to 9 a.m. at the Contemporary Resort pool. The class is open to employees currently certified in Advanced Lifesaving.

Please call **Penelope** or **Barbara** at 824-5424 to sign up.

LABOR DAY CAMPOUT AT CEDAR CREEK

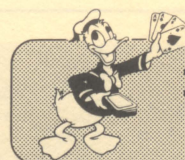
Sign up early for our long Labor Day Campout at Cedar Creek Fish Camp on A1A in New Smyrna, September 4 through September 7. This fantastic trip is only \$9.48 for one night, \$17.96 for two nights or \$26.44 for three nights. Better yet, don't miss a night of fun and stay the full four-day weekend at a savings of only \$34.72.

Motel rooms and efficiencies are available by reservation by calling (904) 428-5844.

Bring your boats as we plan on catching a lot of fish and crabs. We'll also be digging for clams and oysters for our Clam Bake on Saturday night, and there will also be good eating with the Steak Fry on Sunday night.

The deadline to sign up is August 21, so don't miss the chance to celebrate this Labor Day with your family. Stop by Cast Activities today.

Mark your calendars now for the annual Fish Fry at Little Lake Bryan on October 4. This year we are including a Flea Market. Everyone is invited to this annual event. Purchase your tickets at Cast Activities, the Lake Buena Vista Cast Activities or from a Sportsman's Association member. All you can eat of fish, chicken and all the fixin's for the low price of \$7.50 per family (2 adults and 3 children under 12 years) or \$2 per person. Don't miss this delicious dinner and enjoy the "treasures" of the Flea Market. See you there!



DONALD'S DEALS

NEW DISCOUNTS ADDED

Donald's Deals can really help you save money! Just look at some of the discounts offered to cast members by our newest Donald's Deals participants.

• **Crystal Water Company of Orlando** is offering Walt Disney World employees discounts on rental of coolers for natural or distilled water. Make arrangements for equipment that offers natural water from an artesian aquifer. The discounted rates are:

- Room Temperature Cooler, \$18 per year.
- Cold Water Cooler, \$5.95 per month.
- Room Temperature and Cold Cooler, \$5.95 per month.
- Hot and Cold Cooler, \$10.80 per month.

Natural water and distilled water are both available for \$3.15 plus a \$6 refundable deposit per five-gallon bottle. Call Crystal Water at 298-0180 or drop by at 3500 Silver Star Road.

• Solar energy can be your answer to the high cost of hot water. **Delta Energy Systems Inc.** is offering a 15% discount to all Walt Disney World cast members on the purchase of a solar water heater or pool heating system. With the cost of electricity on the rise at an annual rate of 14.5% nationally, it could pay to make the investment on a solar system. Besides the monthly savings on your electric bills, there is a 40% tax credit given by the federal government on systems like these installed in your home. Solar systems have been designed for simplicity, durability, and easy installations; call for a free solar analysis at 834-6773. Let the Florida sun work for you!

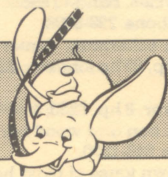
• A deal you can't refuse — at **Godfather's Pizza** — great pizza and great atmosphere at a special price for Walt Disney World cast members and family. There are three convenient locations to serve you: 1009 W. Vine Street in Kissimmee, 525 S. Orlando Avenue, Winter Park and 1062 Montgomery Road in Altamonte, and all offer a full menu for your pleasure. In addition to great food, a 10% discount is available prior to 5 p.m. on any food or beverage, and a

20% discount is available after 5 p.m. Stop by on your way home and visit the Godfather!

• You can look like a million bucks by stopping at the **Off Broadway Hair Designers**. This staff of Sassoon-trained stylists will find the cut that's perfect for you. Hair designing for men and women is available with convenient hours from 9 a.m. to 8 p.m. on Wednesday, Thursday, and Friday or 9 a.m. to 5 p.m. on Monday, Tuesday, and Saturday. Perms start at \$35 and a full range of services are yours at a 15% discount with your Walt Disney World ID. A little investment will give you a lot of good looks! Call for your appointment at 351-6256.

• Friday night, the end of a busy week, why not treat yourself to dinner at the **Golden Pagoda**. This fine Chinese-American restaurant specializes in Cantonese-style cuisine, authentically prepared by native Chinese. Your Walt Disney World ID will get you a 10% discount on meals and take-out orders over \$5. Located in the Pine Hills Shopping Center, the Golden Pagoda is open every day of the week from 11:30 a.m. to 10 p.m.

For a complete listing of Donald's Deals participants, drop by the Cast Activities satellite that's the most convenient for you.



FAMILY FILM FESTIVAL

Pete, a nine-year-old orphan, escaped from his mean foster family via Elliott, the flying dragon who sometimes is invisible but seems to materialize at the most inopportune moments. Pete and his magical dragon turn the whole town of Passamaquoddy upside down in their efforts to lead normal lives.

Come to Family Film Festival's presentation of **Pete's Dragon** to see what happens to town people when they learn a dragon is in their midst.

Show times are:

- Wednesday, August 19, Pacific Room, 7 p.m.
- Friday, August 21, Pacific Room, 7 p.m.
- Sunday, August 23, Pacific Room, 7 p.m.
- Wednesday, August 26, Pacific Room, 7 p.m.

Tickets will be available beginning Friday, August 14, at all Cast Activities locations. As always, tickets are **free** to all cast members and their dependents as listed on Personnel records.

TICKET CENTER

- **Loretta Lynn** — Sunday, September 13, at 8 p.m. in the area. All seats reserved, \$8.50.
- **Pat Benatar** — Thursday, September 24 at 8 p.m. in the area. General admission, \$9.50.
- **Journey** — Thursday, October 22 at 8 p.m. in the area. General admission \$10.50.

BUCCANEER TICKETS ON SALE

Cast Activities will be selling a limited number of tickets to all 11 home games for the Tampa Bay Buccaneers 1981 season.

The tickets will be sold at Cast Activities at the Center Building beginning at **8 a.m. every Monday morning prior to each home game**. Tickets cost \$12 and \$15 and will be sold on a first-come-first-served basis. A maximum of four tickets will be sold per cast member, and you must arrive in person to purchase the tickets.

This year's schedule should prove to be exciting — and if you want to be a part of the excitement be sure to be at Cast Activities early Monday to purchase your tickets.

Continued column 3

The 1981 Tampa Bay Buccaneer home game schedule is as follows:

Preseason

- Saturday, August 22 — Houston — 7 p.m.

Regular Season

- Saturday, September 5 — Minnesota — 8 p.m.
- Sunday, September 27 — St. Louis — 4 p.m.
- Sunday, October 4 — Detroit — 4 p.m.
- Sunday, November 1 — Chicago — 1 p.m.
- Sunday, November 15 — Denver — 1 p.m.
- Sunday, November 22 — Green Bay — 1 p.m.
- Sunday, December 6 — Atlanta — 4 p.m.
- Sunday, December 13 — San Diego — 1 p.m.

MORE BUCS INFO

The 2R's shop at the Walt Disney World Village also has tickets available to all Buc home games. All 2R's tickets are in the end zone at \$8 per seat.

Transportation is also available through 2R's. Chartered bus tickets are being discounted for cast members at \$8 per person, with departure 2½ hours before kickoff. Check with 2R's for full details.

CLASSIFIED ADS

HOUSING

For Sale

Land — will trade 3 acres commercial land for duplex, quad, etc., financing negotiable. Phone 851-3307.

Mobile Home — 1980 14' x 70' Quality home, \$2,800 down and assume mortgage at 13%. Phone 298-4218.

House — Windermere — 3 br/2½ ba, family room, dining room, eat-in kitchen, fireplace, sun deck, 34' x 14' porch, \$134,500 with mortgage balance of \$48,000 assumable at 8.5%. Call 876-2432.

Condo — Altamonte Springs — 1 br, appliances, carpeting, drapes, central air/heat, paddle fans, balcony overlooks pool, \$44,900. Call 862-5147 between 5 and 9 pm.

Mobile Home — 14' x 70', set up in modern park. Phone Kissimmee 846-0301.

Mobile Home — Kissimmee — 12' x 60', 2 br/1 ba, carpeting, \$6,300. Call Kissimmee 847-6151.

Mobile Home — Kissimmee — 3 br/2 ba, carpeting, central air/heat, drapes, appliances, \$3,500 and assume mortgage. Phone Kissimmee 847-7369.

House — Dover Cove subdivision — 2 br/2 ba, carpeting, eat-in kitchen, appliances, drapes, central air/heat, garage, fully landscaped, cathedral ceiling in great room, screened patio, \$72,900. Phone 277-2071.

House — Village Green — 3 br/2 ba, eat-in kitchen, central air/heat, dining room, appliances, garage, fenced-in yard, custom drapes, fireplace, full underground basement/rec room, 2,904 sq ft living area, 4,000 total sq ft, \$85,850. Phone 299-4485.

Mobile Home — Kissimmee — 24' x 60', 3 br/2 ba, carpeting, appliances, drapes, 12' x 40 carport, 8' x 10' storage shed, skirting. Phone 847-7950.

Mobile Home — Kissimmee — 12' x 64', 3 br/1½ ba, \$7,000 cash or \$2,000 down and \$113/mo. Stop by lot 228, Siesta Lago in Kissimmee anytime on Tues or Wed and after 5 pm, Thurs thru Mon.

For Rent

House — Kissimmee — 2 br, \$395/mo. Phone 846-7551.

Continued on page 8





CLASSIFIED ADS

HOW TO SUBMIT AN AD

Write your ad down, keeping it short and to the point. You **MUST** include your name, department number, work extension and home phone number for inquiries. Then, send your ad through Inter-Office Mail to Cast Communications, or drop it by our office on the 2nd floor of the Center. All **HOUSING** ads must be submitted to Cast Activities, 2nd floor of the Center. Deadline for submitting ads is 8 a.m. Friday, seven days prior to publication. A random selection of ads will appear each week in **EYES & EARS** depending on space availability.

- Duplex** — Pine Castle — 2 br, appliances, air, carpet, washer/dryer hookups, \$300/mo. Call 859-2121 or 859-1031.
- House** — St. Cloud — 3 br/2 ba, pool, \$550/mo, first, last and security deposit. Call 351-4509 or 892-3316 after 6:30 pm.
- Condo** — New Smyrna Beach — 2 br/2 ba townhouse on the beach, pool, tennis court, furnished, \$300/wk. Phone 645-2631.
- Farm** — 5-acre farm just 15 minutes from new Jetport. Phone 841-1574.
- Apartment** — Winter Park — efficiency, unfurnished, carpeting. Phone 841-0295.
- House** — Williamsburg — 2 br/2 ba, family room, appliances, pool, central air/heat, garage, appliances, walk to clubhouse, \$250 deposit; \$450/mo. Phone 351-4653.
- House** — Sand Lake Hills — 4 br/2 ba, family room, carpeting, dining room, eat-in kitchen, appliances, drapes, central air/heat, garage, close to excellent elementary school, Disney and Martin, \$600 security deposit, \$625/mo. Phone 275-1473.

ROOMMATES

- Female** — needs roommate to share 3 br home in Kissimmee, central air/heat, \$160/mo includes utilities. Call 846-8017.
- Female** — has apt, 2 br/2 ba, near pool, \$145 plus half utilities. Phone 851-5765.
- Female** — has apt, central air/heat, small but nice, \$120/mo plus utilities. Call 855-0656.
- Female** — mobile home in Ferndale, 24' x 64', 3 br/2 ba, central air/heat, on 10 acres, \$150/mo plus half utilities. Phone 469-2677.
- Female** — has 2 br/2 ba duplex in Kirkman/I-4 area, \$200/mo plus utilities. Call 351-1099 after 7 pm.
- Female** — needs housing, please contact at 4567 Seven Dwarf Lane, Kissimmee.
- Male** — needs housing, room or share apt, approximately \$35/wk. Phone 574-1758.
- Female** — needs same to share 2 br townhouse. Call 423-5698.

TRANSPORTATION

- '77 Grand Prix** — T-top, low mileage, new tires, stereo 8-track, excellent condition, \$3,995. Phone Kissimmee 846-1550.
- '68 VW Camper** — pop-top, new engine, brakes, tires, stereo, \$1,500 firm. Call Kissimmee 846-1550.
- '67 VW Bug** — excellent condition, \$1,300 or best offer. Call 859-6194 after 6 pm.
- '78 Honda** — Hawk 400cc, fairing windshield, crash bar, lots of extras, very clean, 6,600 miles, \$1,350. Call Ron at 851-7993.
- '74 Chevy Nova** — a/t, a/c, p/s, p/b, white walls, asking \$900. Call 656-0164.

- '75 VW Rabbit** — 2-dr, a/c, AM/FM radio, engine rebuilt in 1980, runs and looks good, \$1,850. Call 423-2861 evenings or weekends.
- '76 Fiat 131S** — 5-speed, a/c, tilt wheel, AM/FM cassette stereo, reclining bucket seats, 4-cyl, tinted windows, gauge package, clean, best offer over \$2,500. Call 352-0352.
- '73 Honda CL350** — new brakes, tires, paint with pin-striping, \$625. Call 298-2872.
- '73 VW Superbeetle** — stick, a/c, \$1,600. Call 892-5740.
- '79 Yamaha** — \$200. Call 892-5740.
- '71 Ford T-Bird** — a/c, AM/FM stereo, p/s, p/w, excellent rubber, life-time battery, exhaust system and radial tuned shocks, a great car. Call 351-3264 after 6:30 pm.
- '73 VW Beetle** — 25 mpg city, new paint. Call Kissimmee 847-3107.
- '61 MGA** — stick shift, completely restored, white with black interior, \$4,200. Call (813) 294-2245.

MISCELLANEOUS

- Restaurant Equipment** — complete package of seating for 180, used, \$12,000 cash. Phone 851-3307.
- Canoe** — 13'6" Blackhawk Bobtail, built for electric motor and use of battery, 3 padded seats, dry storage in center, paddles, cushions, \$125 firm. Call 351-0906.
- Turntable** — Sanyo, belt drive, 2 speed, Shure stylus, \$85. Call 628-1483.
- For Sale** — solid wood, custom made room divider with planter, \$35; 16mm sound movie projector, excellent condition, \$100; dining room fixture of wood and brass with 5 lamps, \$40. Call 855-4834.
- Auto Parts** — 1972 VW passenger door, red, \$15; 1969 VW gas tank, \$10; 1969 VW complete steering wheel column, \$15. Call 855-4834.
- Bed** — king-size waterbed, frame, bookcase headboard, \$150. Phone 351-0460 between 11 am and 2 pm.
- Trailer** — single motorcycle trailer, \$75. Call 351-0460 between 11 am and 2 pm.
- For Sale** — oak push bumper, 3/8-inch angle iron backing complete, weight approx 100 lbs, \$35. Phone 299-4737.
- Furniture** — oval dining table, walnut grain Formica, 40" x 60", with two 12" leaves and wooden legs, \$25; upholstered barrel chair, neutral color check pattern, \$25. Phone 656-9500.
- Tires** — Bridgestone Super speed radial tire, 175 SR-14 with rim, brand new, \$75 or best offer; Goodyear Polyglass D-70 14, best offer. Phone 656-9500.
- Boat** — 15'6" Tri-Hull bowrider with 50hp Evinrude outboard, tilt trailer, \$1,800. Call 857-9392.
- FREE** — toy fox terrier, neutered male, has shots, license, tags, loves kids. Call 896-9325.
- Parakeets** — 2 pair breeding parakeets; 1 pair is albino, the other pair is a yellow male and a green female; both pair have large breeding cage, nesting box, food and water dishes. Call 896-9325.
- For Sale** — 6' combo stereo, AM/FM radio, 8-track, \$100; portable ceiling fan, \$75; recliner, \$50; queen-size waterbed, \$100. Phone 298-1025 after 6 pm.

- Mower** — Gravelly tractor, 10 hp, almost new, \$5,000 new, asking \$3,000 cash. Phone 851-3307.
- Motor Home** — 1977 Dodge Coachman mini motor home, 20', sleeps 6, great buy. Call 857-0117.
- Boat** — 15' Cacci Craft, 70 hp Mercury, electric wench, tilt trailer, low hours, like new, \$4,000 cash. Call 851-3307.
- Camper Top** — fits short bed import trucks, excellent condition. Call 894-5759.
- Wardrobe** — cedar lined, \$85. Call 859-6497 after 6 pm. or weekends.
- Ski Boat** — 16' 1971 Glastron, 106 Chrysler, with ski equipment, \$2,250. Call Kissimmee 892-4553.
- Motor Home** — 19' Tioga mini motor home on 1973 Dodge chassis, 360 engine, roof and auto air, 4 new tires, sleeps 6, bath, \$7,000. Phone Kissimmee 847-9215.
- Gas Range** — 30" Tappan gas range, bronze color with chrome top, low broiler, very good operating condition, \$125; overhead Nutone fan/hood, 2-speed, also available. Call 299-3489.
- Pool Table** — 5' x 10", 1" slate, new felt and pockets, Belgian balls, cue sticks, no reasonable offer refused. Call 277-4937.
- Birds** — baby cockatiels, \$35 each; Indian Ringneck parakeet, \$85. Call Jim or Pat at 275-8973.
- For Sale** — 1967 Ford 4-speed transmission, top-loader, w/Hurst competition, plus shifter, \$200. Phone 259-3857.
- Lawnmower** — Wards self-propelled, 4 hp 21" cut with rear bag catcher, good condition, \$100 or trade for rifle or shotgun of equal value. Call 299-1425 after 5 pm.
- TV Game** — Intellivision game with baseball, black jack, poker and battle star, \$250 or best offer. Call 859-1237.
- Babysitter** — needed for 11-month-old child in your home, Park Ridge and Windermere area, Mon-Fri from 7:30 am to 5:30 pm. Please call 298-2274 after 6 pm.
- Drums** — 7-pc set, 4 cymbals, heavy duty hardware and seat, \$350 or best offer. Call 352-1558 before 2 pm or after 6 pm.
- Bicycles** — 2 small girls' bicycles, banana seats, high handlebars, \$25 and \$30. Phone 299-9309.
- Boat** — 19' "Old Salt" open fisherman, center console, dive platform, Bimini top, 85 hp Johnson, \$2,495. Phone Kissimmee 846-1550.
- For Sale** — riding lawn mower, 8 hp, \$250; 4-pc bean bag couch set, \$90; wrought iron and wood bar with stools, \$175. Call Kissimmee 846-1550.
- Furniture** — loveseat in brown tones of plaid herculon, \$90; recliner in green simulated leather, \$35; both in good condition. Phone 351-1845.
- For Sale** — wrought iron poles in scroll design, three are 8' high and two are 5' high, used only 2 months, \$20; 20 jalousie window replacements, 4 1/4" x 34", 50 cents or best offer. Phone 855-8188.
- Piano** — Bennett Bretz upright, \$450. Call 851-6879 between 6-8 pm only.
- Golf Clubs** — Titleist woods, 1, 3, 4; regular shaft, \$59. Phone 859-3623.
- Bass Boat** — 16'4" Pro Craft, completely loaded, 115 hp Johnson, Cobra drive-on trailer, assume payments. Phone (904) 228-3506.



The Editor: **EYES & EARS**, Walt Disney World Co. • P.O. Box 40, Lake Buena Vista, FL 32830

Contributors: Editor: Dent Thompson • Graphics: Sue Stojanovich
Typescript: Bonnie O'Dell • Walt Disney World Print Shop
Walt Disney World Mail Room

©1981 Walt Disney Productions

This document has been brought to you by

[The Progress City Disneyana Collection](#)



A Project of [Progress City, U.S.A.](#)

Historians and Authors please cite "The Progress City Disneyana Collection" when referencing this item. Thank you!

To support the Progress City Public Library's efforts, please visit our [Patreon](#)

Or donate via [PayPal](#)